



Duvinage offers an enormous range of railing options for your stair. They include glass, stainless steel, aluminum, multiline, cable, perforated panels, solid metal panel, brass, steel and most anything else that you wish to create. Wood hand and grab rails in any available species are hand crafted and then receive a finish in the field by others to match your flooring or decor.

### RAIL SAMPLES

Baluster Railings (See Baluster Page)



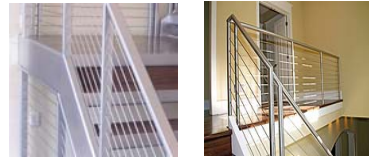
Solid Panel



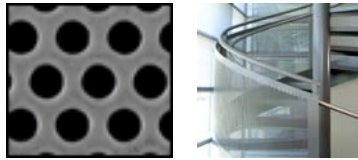
Glass Railing



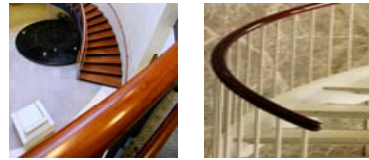
Cable Railing



Perforated Panels



Wood Top & Grab Rails



Multiline

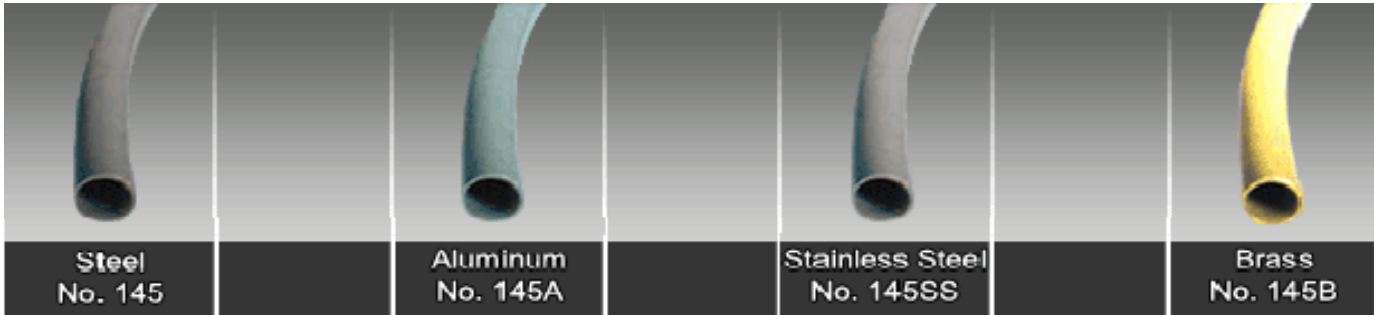


### STANDARD TOP AND GRAB RAIL PROFILES

#### Pipe Rails

Steel and Aluminum spiral rails are continuous and cold formed to a perfect spiral.

*Note: Custom pipe sizes are available.*

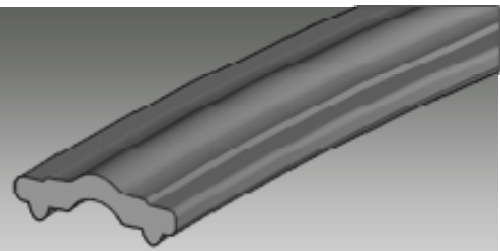
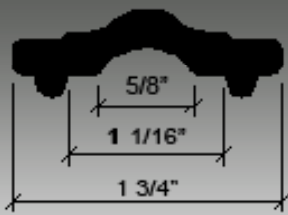
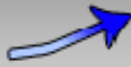


Standard Sizes Available:

1 5/16" OD (1" Sch 40 Pipe)	1 5/8" OD (1 1/4" Sch 40 Pipe)	1.9" OD (1 1/2" Sch 40 Pipe)
--------------------------------	-----------------------------------	---------------------------------

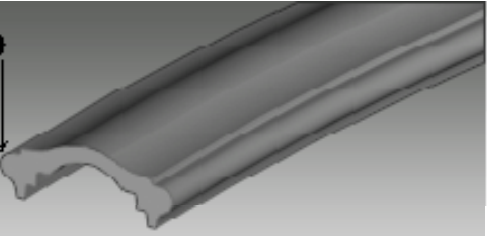
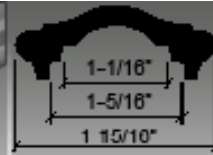
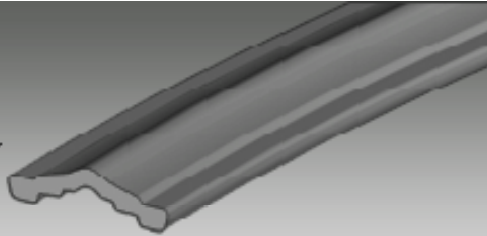
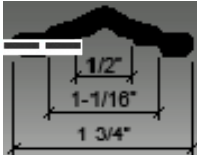
#### Steel Profile Rail Designs

Perfect for church rail and able to attach to most rail ends.



No. 511

Steel Profile Matches: A, C, D, E, F, G, H, I, J, K



No. 512

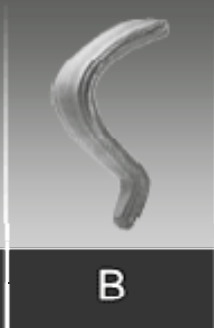
Steel Profile matches: A, B, C, D

No. 513

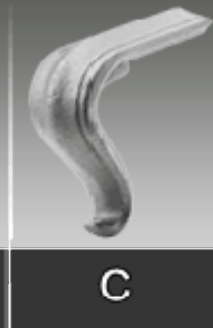
Steel Profile matches: E, F, G, H, I, J, K



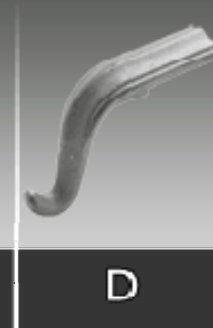
A



B



C



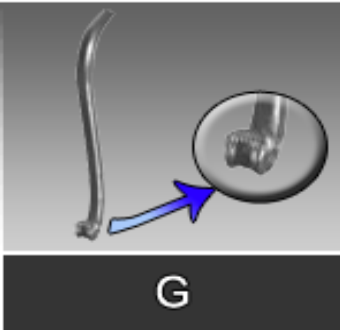
D



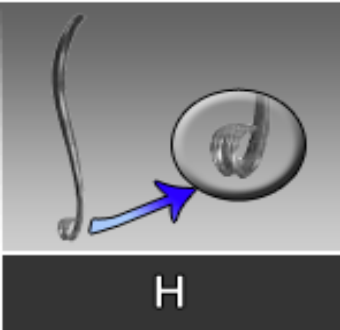
E



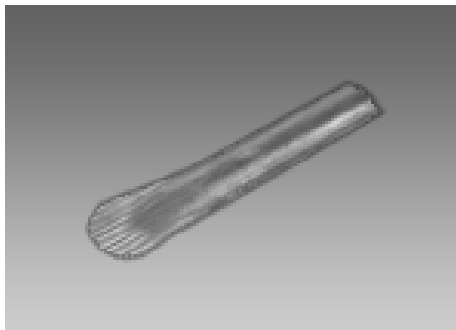
F



G



H



I



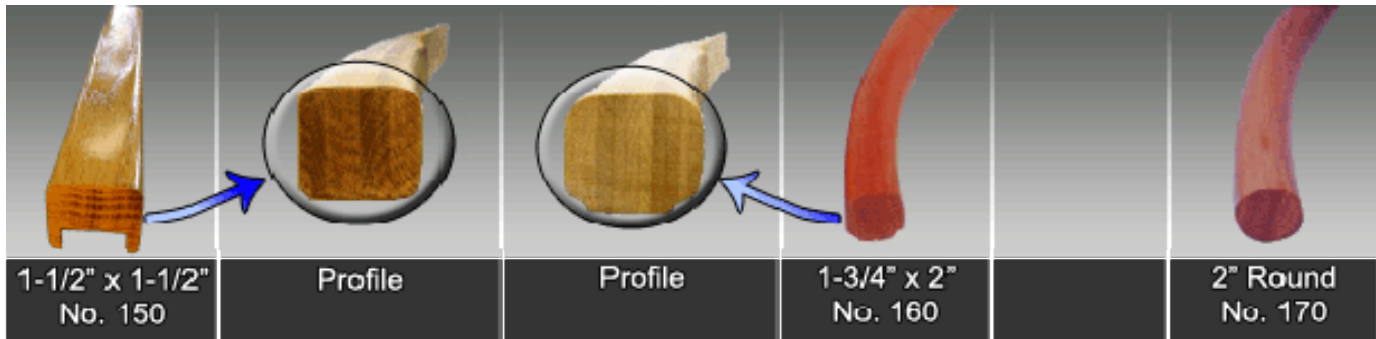
J



K

## Standard Wood Rail Profiles

Standard Wood is American Birch.  
**Note:** Custom profiles are available.



## Wood Railing Swatches

